

## CASE HISTORY :- KEYMED SOUTHEND

ARCHITECTS	AYSHFORD SANSOME, WICKFORD
CONSTRUCTION	SMALLWOOD GABION CONSTRUCTION
GABION DESIGN	HY-TEN GABION SOLUTIONS

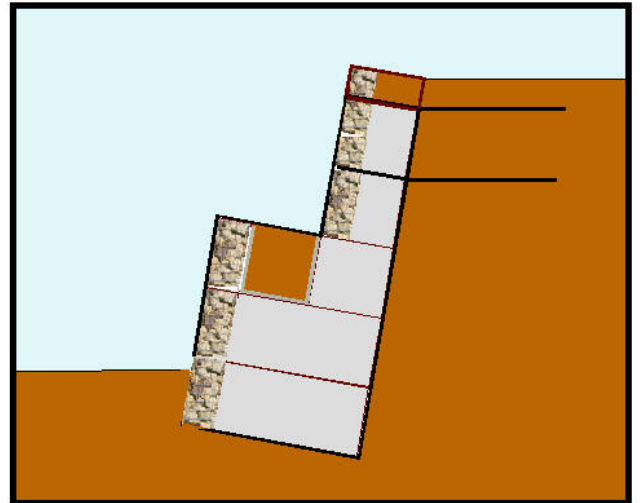


As part of an ongoing improvement scheme to provide child care facilities and landscaping at the factory complex, the architect required an attractive wall construction that incorporated planting to further enhance the visual appearance of the structure.

Following consultation with the architect Hy-ten designed a gabion retaining wall based on the gabion 700 system with 700mm wide planting cells.

The 700 system was chosen for the higher quality of construction that could be achieved. The structure is faced with attractive grit stone contained by a secondary longitudinal diaphragm set back 300mm from the face of the unit. The planting cell was lined with a geotextile to contain the soil fill with the remainder of the structure filled with crushed concrete. The use of a facing stone and crushed concrete was chosen to reduce the supply cost of the fill materials.

At the far end of the wall a decking was required with stair access, the decking and stairs were supported on timber support posts, To close off the area under the decking a 300mm gabion fence construction was used utilising the support posts as vertical support for the veneer gabion form.



**Hy-Ten Gabion Solutions also provides design services and technical support, for further information please contact :**

**STEVE LISLE, SALES MANAGER (Welded)  
TEL 01902 712200 MOBILE 07831 176898**

**JOHN BARKER, SALES MANAGER (Woven)  
TEL 01295 255594 MOBILE 07920 536948**